

# Summary of CEMARS<sup>®</sup> certification:



## Waitaki Biosciences (a division of Pharmazen Limited)

Year 1 of 3 Year Certificate Period

*Waitaki Biosciences (a division of Pharmazen Limited) meets the requirements of CEMARS<sup>®</sup> certification having measured its greenhouse gas emissions in compliance with the requirements of ISO 14064-1:2006 and committed to managing and reducing its emissions in respect of the operational activities of its organisation*



**Introduction<sup>1</sup>** – Waitaki Biosciences is the trading entity of the publicly listed company PharmaZen Ltd. Waitaki Biosciences manufacturing plant and office is located in Christchurch, employing 19 staff. Waitaki Biosciences specializes in the manufacture of nutritional supplement ingredients for the human and animal nutraceutical markets. Raw materials are predominately sourced as quality by - products of New Zealand’s Export Meat and Marine aquaculture industries. These materials are converted in whole or part to powders using proprietary drying technology. Waitaki Biosciences products provide solutions to health conditions in single ingredient formats or as part of client designed formulations. Waitaki Biosciences exports 80-90% of the product to the USA, Europe and Asia Pacific. Waitaki Biosciences acknowledges that its operation will have a direct impact on the environment. Waitaki Biosciences is committed to operating as an environmentally responsible company through waste reduction and recycling, energy savings and GHG emission reduction. The company has adopted the CEMARS program to facilitate these intentions. The company will progressively reduce the overall environmental impact through a managed monitoring program that will be implemented and integrated into the company’s existing Quality Management Program.

**Boundary** – Figure 1 below shows the organisational structure used for describing the organisation’s greenhouse gas (GHG) emissions inventory, and what business units were included in the inventory in the context of the entire organisational profile. There were no business units excluded from this inventory.

---

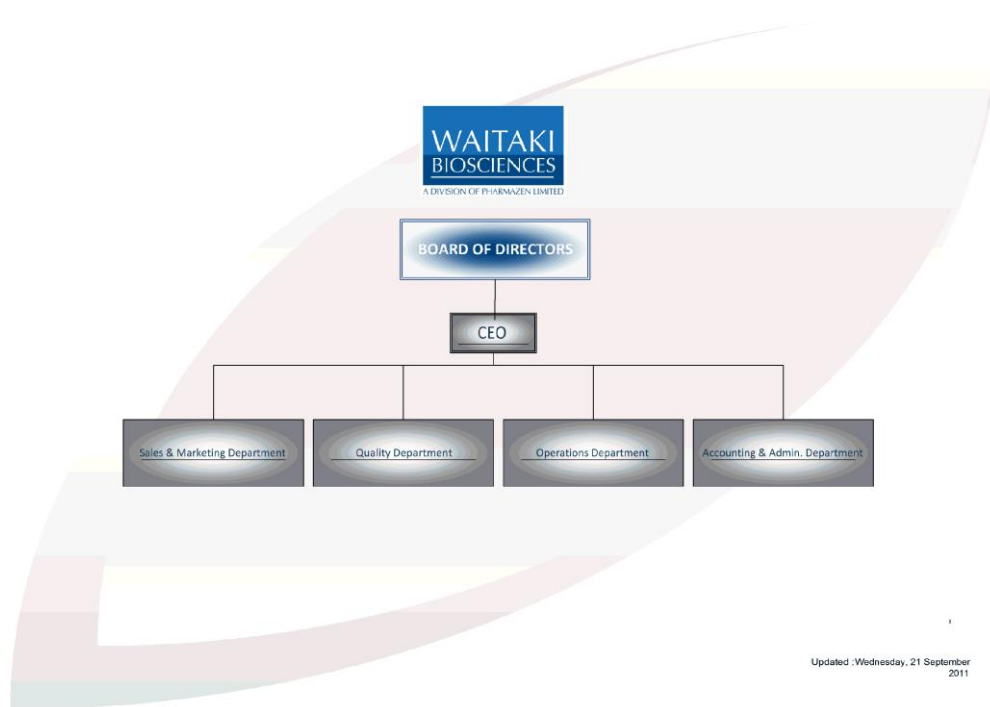
<sup>1</sup>**Disclaimer:** This Disclosure Statement is a summary of the verified information considered for certification and the certification decision. It should not be taken to represent the full submission for certification. While every effort has been made to ensure that the information in this Disclosure Statement is accurate and complete, Landcare Research does not, to the maximum extent permitted by law, give any warranty or guarantee relating to the accuracy or reliability of the information.

# Summary of CEMARS<sup>®</sup> certification:



## Waitaki Biosciences (a division of Pharmazen Limited)

Year 1 of 3 Year Certificate Period



Updated: Wednesday, 21 September 2011

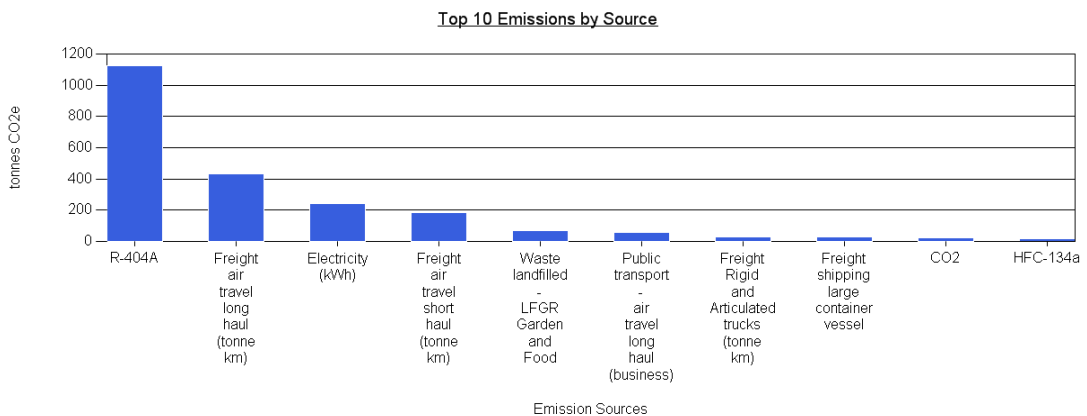
**Figure 1:** Organisational structure showing business units included.

**Consolidation approach** – The operational control consolidation approach has been used to account for operational emissions with reference to the methodology described in the GHG Protocol and ISO 14064-1 standards.

**Base year** – 1/01/2010 – 31/12/2010

**Measurement period** – 1/01/2010 – 31/12/2010

**Emissions source inclusions** – The operational GHG emissions for the organisation by emissions source are shown in Figure 2 below.



**Figure 2:** GHG emissions by emissions source.

# Summary of CEMARS<sup>®</sup> certification:



## Waitaki Biosciences (a division of Pharmazen Limited)

Year 1 of 3 Year Certificate Period

Emissions as tonnes of carbon dioxide equivalents (tCO<sub>2</sub>e) for this period were:

Scope 1:	1,168.38 tCO <sub>2</sub> e
Scope 2:	240.96 tCO <sub>2</sub> e
Scope 3:	813.68 tCO <sub>2</sub> e
Total:	2223.02 tCO <sub>2</sub> e

**Emissions source exclusions** – The following emissions sources were excluded from the inventory for this measurement period:

- Couriers, office air conditioning units and waste water solids were excluded as proven to be *de minimis*.
- Embodied emissions associated with processing aids, cleaning agents and packaging were excluded as considered outside the scope of the organisational inventory.
- Fat recovery was excluded as these were sold for further manufacturing use, not disposed of at landfill

**Emissions reduction commitments** – A GHG emissions management plan and reduction targets have been developed.

Waitaki Biosciences has committed to reducing total GHG emissions by a minimum of 2.5% per annum. Specific targets include:

1. Reduce fugitive emissions of refrigerants by 2.5%
2. Reduce emissions from Long Haul Airfreight by 2.5%
3. Reduce supplied electricity consumption by 5%

**Verified by** – Prescott Horn Limited

**Data quality score** – Good

**Threshold of materiality** – Excluded emissions do not exceed 5% of the total footprint for organisation stated.

**Level of assurance** – Reasonable

**Certification status** – CEMARS certified organisation.

**Certificate number** – 2011196J – Year 1

**Valid until** – 21 March 2015

Waitaki Biosciences (a division of Pharmazen Limited), Unit 5/13 Desi Place, Hillsborough 8022,  
Christchurch, New Zealand. Telephone: +64 (0) 3 337 4853.  
Email: <mailto:stevec@waitakibio.co.nz> Web: [www.waitakibio.com](http://www.waitakibio.com)