

Summary of CEMARS[®] certification:



Flight Centre (NZ) Limited

Flight Centre (NZ) Limited meets the requirements of the CEMARS^T certification having measured its greenhouse gas emissions in compliance with ISO 14064-1:2006 and committed to managing and reducing its emissions in respect of all operational activities of its organisation including Travel Money (NZ) Limited.



Introduction¹ – Flight Centre (NZ) Limited is a fully owned subsidiary of Flight Centre Pty Limited, a publically listed company on the Australian Stock Exchange (under code FLT), and Australasia's best known travel agency group with more than 2,000 shops and businesses in 11 countries.

Flight Centre New Zealand was founded on 23 June 1987 and since has grown to include more than 140 retail locations employing approximately 1,000 staff and is the country's largest travel retailer.

Flight Centre, through its retail and corporate brands, provides complete travel services for leisure and business travellers. In addition, the company's corporate travel management network, FCM Travel Solutions, extends to more than 40 other countries through strategic licensing agreements with independent local operators.

The company's leisure, corporate and wholesale brands include:

- Flight Centre
- Student Flights
- Cruiseabout
- Itchy Feet
- Round the World
- First and Business
- FCM Travel Solutions
- Corporate Traveller
- Stage & Screen Travel and Freight Services
- Campus Travel

¹ **Disclaimer:** This Disclosure Statement is a summary of the verified information considered for certification and the certification decision. It should not be taken to represent the full submission for certification. While every effort has been made to ensure that the information in this Disclosure Statement is accurate and complete, Landcare Research does not, to the maximum extent permitted by law, give any warranty or guarantee relating to the accuracy or reliability of the information.

Summary of CEMARS® certification:

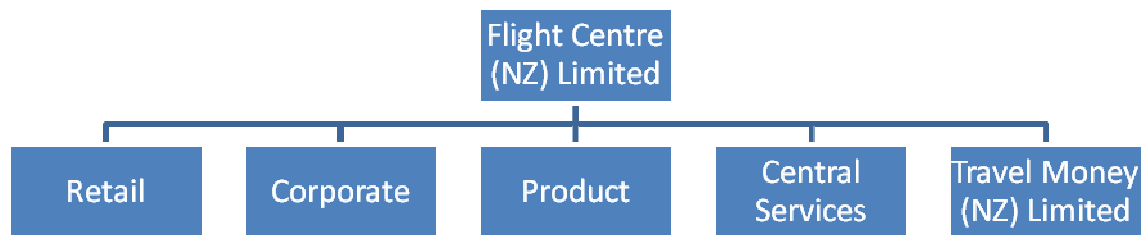


Flight Centre (NZ) Limited

- CiEvents
- Flight Centre Groups
- quickbeds.com
- Infinity Holidays
- Escape Holidays
- Travel Money

Flight Centre, and its associated brands, aspires “to open up the world for those who want to see” and is committed in doing so in more sustainable and environmentally friendly way. It has chosen the certification process as first step in a long journey of adopting more sustainable processes and business practices providing it with a benchmark for future improvements.

Boundary – the diagram below shows the organisational structure used for describing Flight Centre’s greenhouse gas (GHG) emissions inventory, and what business units were included in the CEMARS® certification. Yellow business units were excluded from the certification.



Consolidation approach – operational control

Base year – 01/07/2009 – 30/06/2010

Measurement period – 01/07/2009 – 30/06/2010

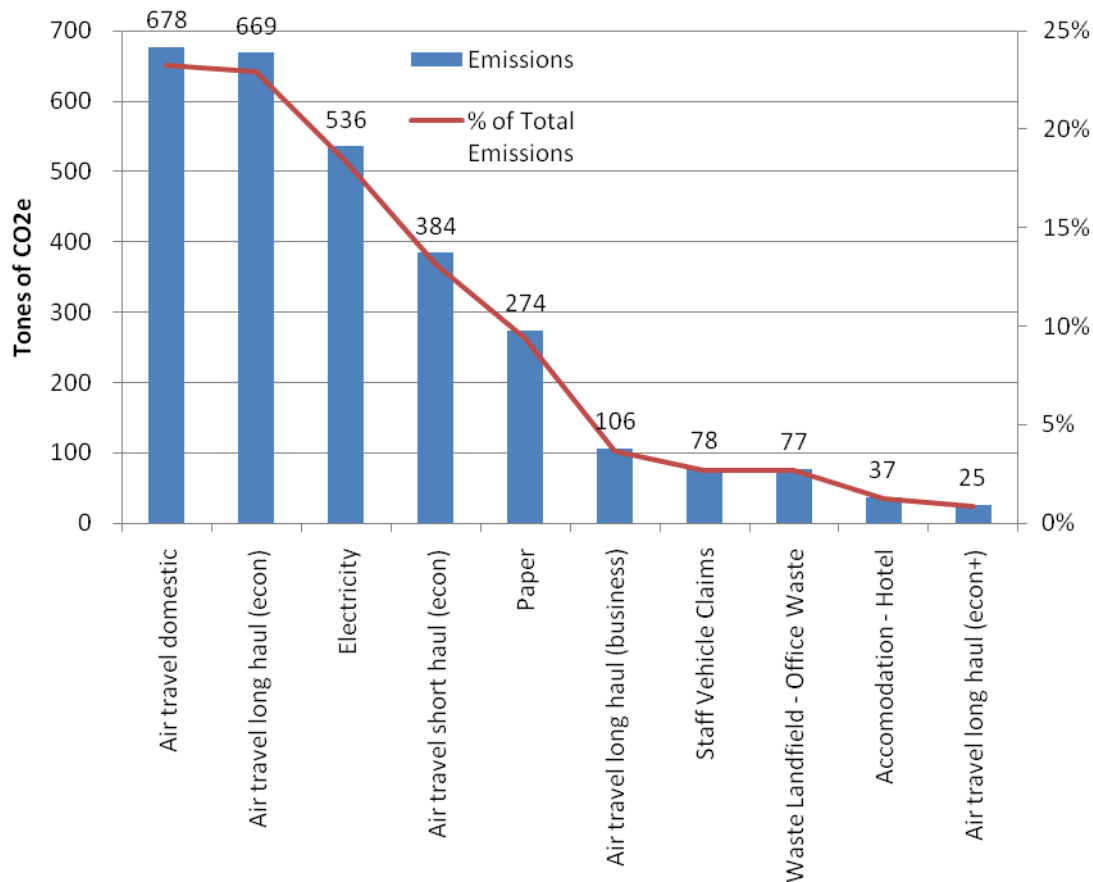
GHG emissions source inclusions – the diagram below shows the operational GHG emissions for Flight Centre by emissions source. Flight Centre’s total emissions for this period were 2,914.84 tonnes carbon dioxide equivalents (CO₂e) comprising 27.31 tonnes CO₂e Scope 1, 535.55 tonnes CO₂e Scope 2 and 2,351.97 tonnes CO₂e Scope 3 emissions.

Air Travel Domestic is the highest emission source, representing just above twenty three per cent (23%) of all Flight Centre’s emissions, closely followed by Long Haul Economy Class Air Travel and then by Electricity. The top three (3) emission sources represent close to sixty five per cent (65%) of total Flight Centre’s annual emissions, with top six (6) sources representing more than ninety per cent (90%).

Summary of CEMARS® certification:



Flight Centre (NZ) Limited



Top 10 GHG emissions sources (tonnes CO₂e)

GHG emissions source exclusions– The following emission sources have been excluded from this inventory:

- Couriers as all parcel sizes are below 2 kg
- Freight as considered *de minimis* representing significantly less than 1% of total emissions
- All home office and other business related emissions not-under direct control by Flight Centre and associated with Flight Centre Brokers operating as contractors
- Gas heating related emissions as it may be used by Flight Centre’s landlords in a number of leased retail locations.

GHG emissions reduction commitments – Flight Centre has developed a GHG emissions reduction plan. Some projects in this plan include:

- Review the use of audio and video conferencing for head office locations to reduce compulsory business travel
- Installation of energy efficient lighting and heating in all new and refurbished retail stores
- Introduction of recycling policy across the whole organisation to reduce waste landfilled

Summary of CEMARS® certification:



Flight Centre (NZ) Limited

- Introduction of new printing technologies to reduce paper usage, e.g. “Follow Me” printing, default duplex
- Review and appointment of preferred CarbonNeutral/carbonZero certified taxi company
- Incorporation of sustainability into company procurement policy

Verified by – carbonZero Strategic Business Unit

Threshold of materiality – Excluded emissions do not exceed 5% of the total footprint for organisation stated.

Level of assurance – Reasonable assurance

Certification status – CEMARS certified “organisation” covering Flight Centre (NZ) Limited and associated entities.

Certificate number – 2010148J

Valid until – 31 October 2013

Flight Centre (NZ) Limited. Level 4, 124 Vincent Street, Auckland Central, Auckland 1010,
New Zealand. Phone: +64 (9) 301 9100. Email: headoffice@flightcentre.co.nz

www.flightcentre.co.nz
www.studentflights.co.nz
www.cruiseabout.co.nz
www.itchyfeet.co.nz

www.nz.fcm.travel
www.corporatetraveller.co.nz
www.stageandscreen.travel
www.cievents.com