

# Summary of CEMARS® certification:



## Lloyds Register Quality Assurance Ltd

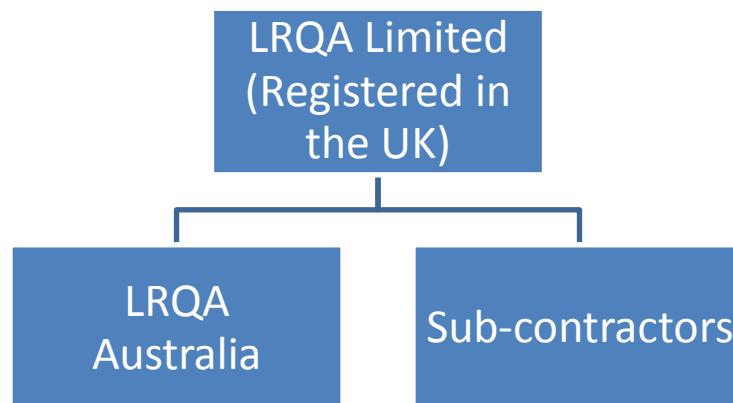
Lloyds Register Quality Assurance Ltd meets the requirements of CEMARS® certification having measured its greenhouse gas emissions in compliance with ISO 14064-1:2006 and committed to managing and reducing its emissions in respect of the organisational emissions of its Australian operations.



**Introduction**<sup>1</sup> – Lloyds Register Quality Assurance Ltd (LRQA) is a professional services firm that provides business assurance services to clients globally. This GHG inventory report applies to the activities under the operational control of the LRQA Australia business unit. LRQA Australia has a single office in Melbourne and draws upon a network of employed and sub-contracted personnel to perform its services in Australia, NZ and the Pacific.

LRQA is a member of the Lloyd’s Register group. The Group’s mission is to enhance the safety of life and property at sea, on land, and in the air. Climate change is expected impact both life and property and therefore the challenge of climate change can be considered as core to our mission. We endeavor to contribute to this challenge through our influence over the development of environmental legislation, regulation and standards and by considering the environmental impacts of delivering services to our customers and the environmental impacts of our business activities.

**Boundary** – the diagram below shows the organisational structure used for describing the organisation’s greenhouse gas (GHG) emissions inventory, and what business units were included in the CEMARS® certification. Yellow business units were excluded from the certification.



**Consolidation approach** – an operational control has been used to determine the organisational boundary.

<sup>1</sup> **Disclaimer:** This Disclosure Statement is a summary of the verified information considered for certification and the certification decision. It should not be taken to represent the full submission for certification. While every effort has been made to ensure that the information in this Disclosure Statement is accurate and complete, Landcare Research does not, to the maximum extent permitted by law, give any warranty or guarantee relating to the accuracy or reliability of the information.

# Summary of CEMARS<sup>®</sup> certification:

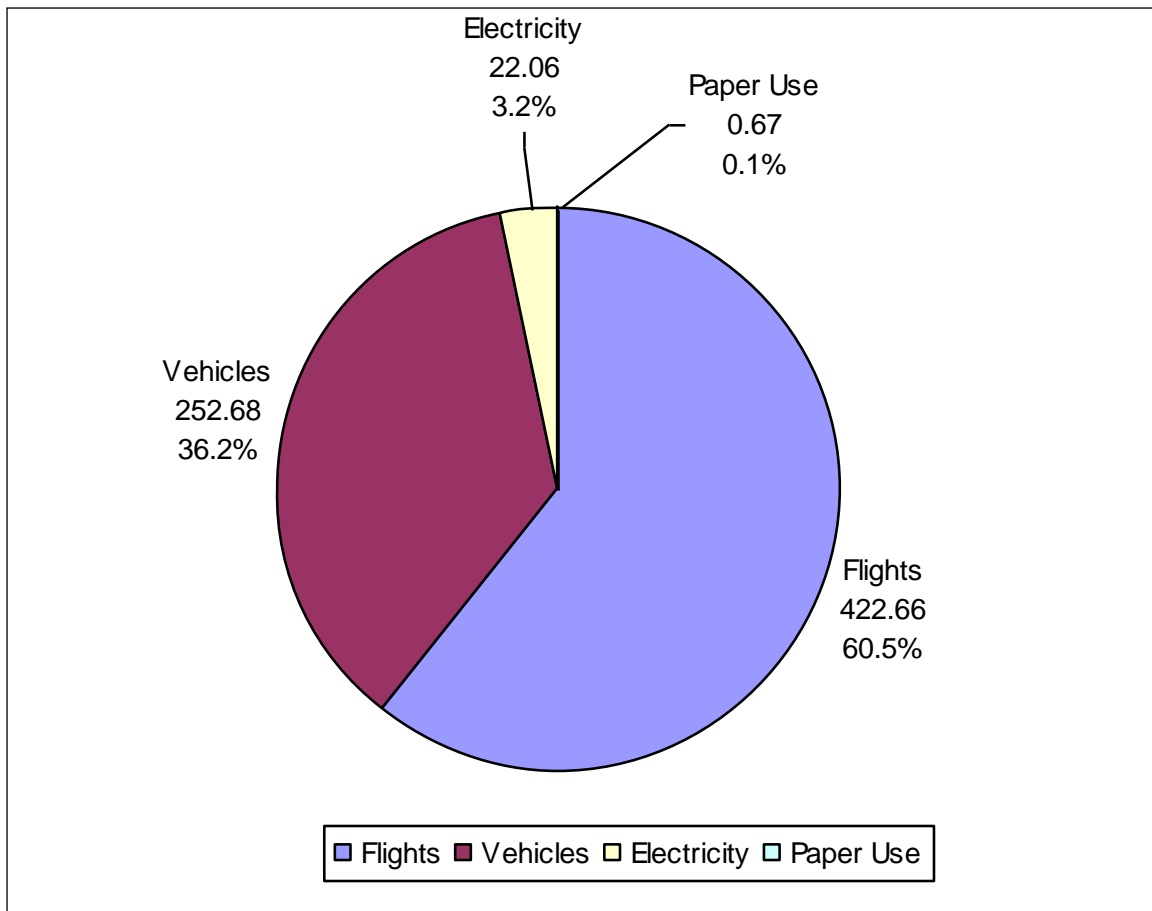


## Lloyds Register Quality Assurance Ltd

**Measurement period** – 01/01/2010 – 31/12/2010

**GHG emissions source inclusions** – the diagram below shows the operational GHG emissions for the organisation by emissions source. Emissions as tonnes of carbon dioxide equivalents (tCO<sub>2</sub>e) for this period were:

Scope 1	0	tCO <sub>2</sub> e
Scope 2:	22	tCO <sub>2</sub> e
Scope 3:	676	tCO <sub>2</sub> e
Total:	698	tCO <sub>2</sub> e



**Emissions intensity** – Our emissions are driven by servicing our clients, therefore an intensity metric derived from this client service is appropriate. LRQA’s gross GHG emissions per client day is 0.2422 tonnes.

# Summary of CEMARS<sup>®</sup> certification:



## Lloyds Register Quality Assurance Ltd

**GHG emissions source exclusions** – The following emission sources were excluded from the inventory for this measurement period, due to each either contributing less than 1% of the total or being outside of LRQA's operational control:

- Refrigeration
- Working from home electricity use
- Waste
- Air-conditioning and water

**GHG emissions reduction commitments** – A GHG emissions management plan and reduction targets have been developed. The 5 year target is to reduce emissions intensity by 2.5% per annum, or 12% by 2015.

This is to be achieved by increasing the use of web-conferencing, exploring opportunities for desk-top based auditing, reviewing the location of employees and contractors to ensure that key geographic areas can be serviced locally and encouraging the use of more efficient fuels and vehicles (including, over the longer term, considering more efficient flights or airlines).

**Verified by** – carbonZero SBU

**Data quality score** – Fair

**Threshold of materiality** – Excluded emissions do not exceed 5% of the total footprint for organisation stated.

**Level of assurance** – Limited

**Certification status** – CEMARS certified organisation

**Certificate number** – 2011040J

**Valid until** – 30 April 2014

Lloyds Register Quality Assurance Ltd, Level 6, 499 St Kilda Road, Melbourne 3004, Australia.  
Telephone: +61 (0) 3 9864 1650, Email: [enquiries-melbourne@lrqa.com](mailto:enquiries-melbourne@lrqa.com), Web: [www.lrqa.com.au](http://www.lrqa.com.au)