

Summary of CEMARS[®] certification:

Achilles Group (UK operations)

Year 2 of 3 Year Certificate Period

Meets the requirements of the CEMARS[®] certification having measured its greenhouse gas emissions in compliance with ISO 14064-1:2006 and committed to managing and reducing its emissions in respect of the operational activities of its United Kingdom based organisation including the offices of Achilles Information Limited in Abingdon and Derby and First Point Assessment Limited in Aberdeen.



Introduction¹ – Achilles Group Limited works to identify, qualify, evaluate and monitor suppliers on behalf of major organisations worldwide. Achilles' services for sustainable procurement help create opportunities for business and reduce risk in the supply chain.

Areas of business activities include:

- Office activity
- Main product – computer databases
- Travel (to offices, customer visits, conferences etc)
- Assessment services
- Conferences

Achilles operates a number of business units around the world and has a presence in over 24 countries. The company has over 500 employees worldwide and operates in the following industry sectors; Construction, Information and Communication Technology (ICT), Mining, Oil & Gas, Pharmaceuticals, Public Sector, Transport, and Utilities.

Boundary – the diagram below shows the organisational structure used for describing the organisation's operational greenhouse gas (GHG) emissions inventory, and what business units were included in the CEMARS certification. Yellow business units were excluded from the certification.

Consolidation approach – The operational control consolidation approach has been used to account for operational emissions with reference to the methodology described in the GHG Protocol and ISO 14064-1:2006 standards.

Base year – 01/05/2007 to 30/04/2008

Measurement period – 01/05/2010 to 30/04/2011

¹**Disclaimer:** This Disclosure Statement is a summary of the verified information considered for certification and the certification decision. It should not be taken to represent the full submission for certification. Whilst every effort has been made to ensure that the information in this Disclosure Statement is accurate and complete, Landcare Research does not, to the maximum extent permitted by law, give any warranty or guarantee relating to the accuracy or reliability of the information.

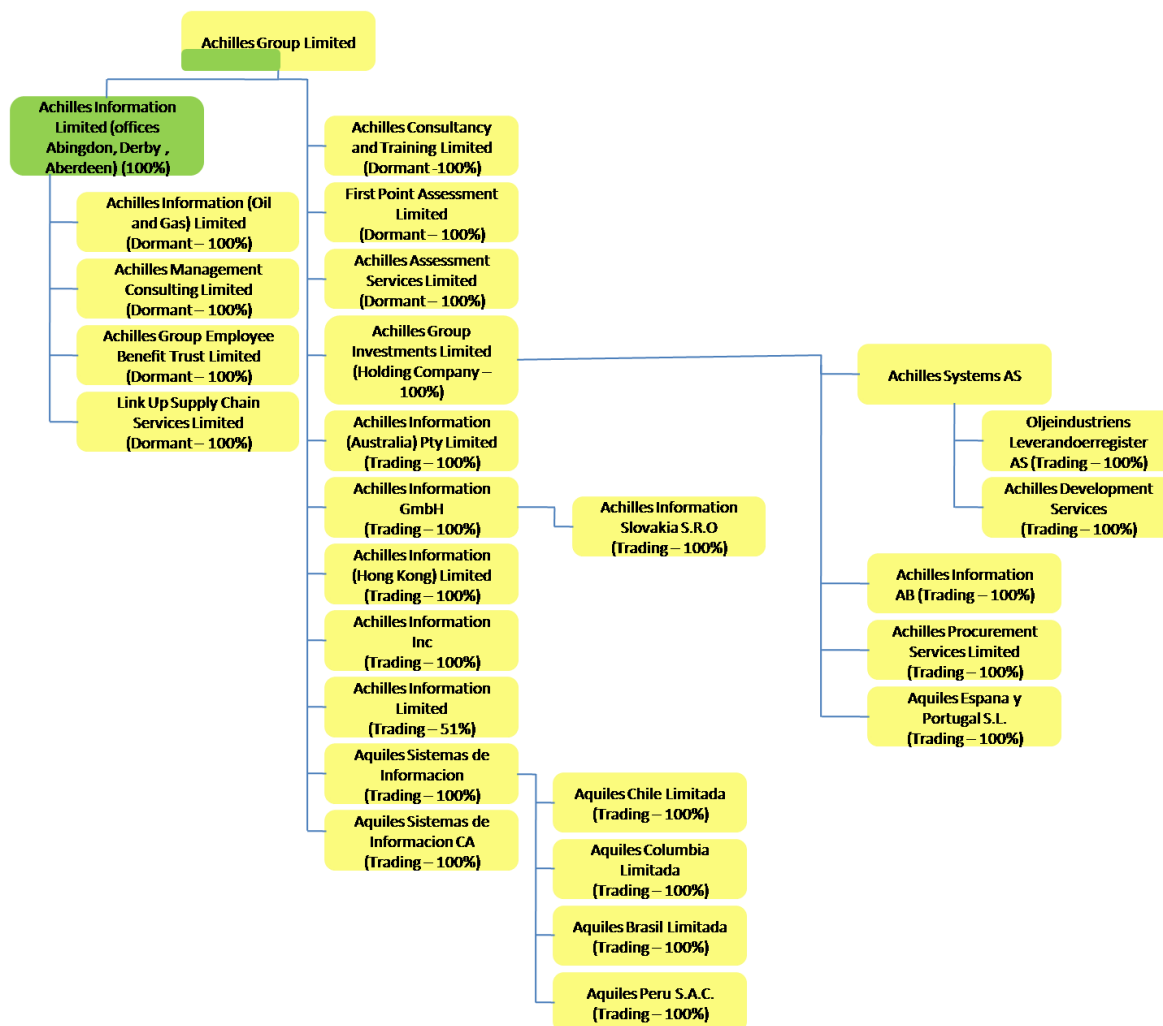


Figure 1: Organisational structure showing business units included and excluded.

Emissions source inclusions – The operational GHG emissions for the organisation by emissions source are shown in Figure 2 below.

Emissions as tonnes of carbon dioxide equivalents (tCO₂e) for this period were:

- Scope 1: 66.63 tCO₂e
- Scope 2: 363.46 tCO₂e
- Scope 3: 457.78 tCO₂e
- Total: **887.86 tCO₂e**

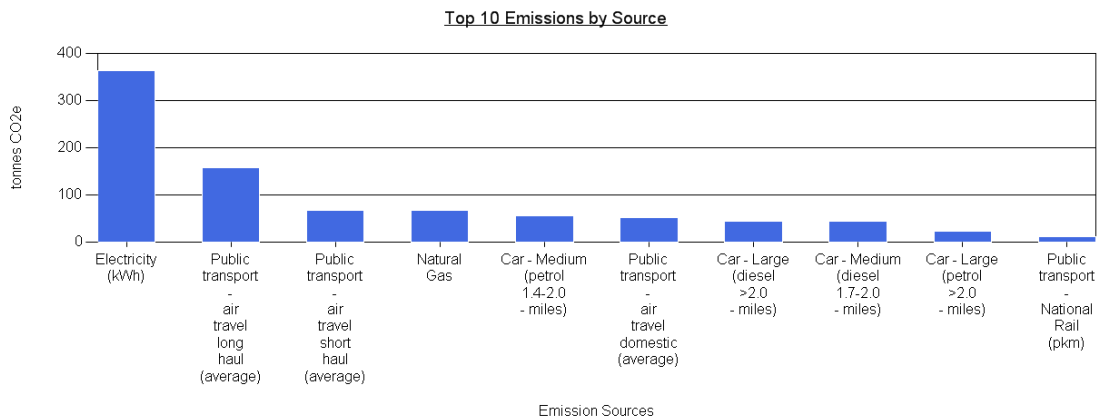


Figure 2: GHG emissions by emissions source.

Emissions intensity –

- 42.55 tonnes CO₂e per £M gross turnover
- 4.33 tonnes CO₂e per full time employee

Emissions source exclusions – The following emissions sources were excluded from the inventory for this measurement period, as these were proven to be *de minimis*:

- Couriers
- Taxi Travel
- Bus Travel
- Waste to landfill

Emissions reduction commitments – Achilles Group (UK operations) has developed emissions reduction targets and a GHG emissions reduction plan, key targets include:

- The metric that will be used to measure progress is relative carbon emissions (in tCO₂e) and the key performance indicators (intensity metrics) will be gross turnover and the number of full time employees.
- Achilles recognises the carbon reduction commitments from the UK government, which is to reduce CO₂ emissions by 30% by 2020. Achilles has pledged to reduce its relative emissions by 3% (against the baseline year) by 31st April 2011 and is looking to align with the carbon reduction commitments from the UK government.

Key reduction projects from the management and reduction plan include:

- Air travel policy review – Assess options for monthly cap on air miles, investigate video conferencing in key offices.
- Car travel policy review – Assess options for an incentivisation scheme for train travel.
- Lighting campaign – Sustained company-wide ‘Switch it off’ campaign and lighting efficiency improvement analysis.
- Data management – Continual improvement of existing expense claim forms to facilitate accurate data entry and collection.
- Carbon campaign – New campaign for 2012 to raise awareness about carbon emissions.

Emissions reductions summary against last year's plan –

- Relative reduction against base year
- 1.5% absolute reduction against last year
- 14% air travel reduction

Verified by – carboNZero, Holdings Limited

Data quality score – Good

Threshold of materiality – Excluded emissions do not exceed 5% of the total footprint for organisation stated.

Level of assurance – Reasonable

Certification status – CEMARS certified organisation.

Certificate number – 2010118J – Year 2

Valid until – 31 August 2013