

Summary of CEMARS® certification:



Achilles Group (UK Operations)

Achilles Group Limited meets the requirements of CEMARS® certification having measured its greenhouse gas emissions in compliance with ISO 14064-1:2006 and committed to managing and reducing its emissions, in respect of the operational activities of its United Kingdom based organisation including the offices of Achilles Information Limited and First Point Assessment Limited in Aberdeen, Abingdon and Derby



Introduction¹ – Achilles Group Limited works to identify, qualify, evaluate and monitor suppliers on behalf of major organisations worldwide. Achilles' services for sustainable procurement help create opportunities for business and reduce risk in the supply chain.

Areas of business activities include:

- Office activity
- Main product – computer databases
- Travel (to offices, customer visits, conferences etc)
- Assessment services
- Conferences

Achilles operates a number of business units around the world and has a presence in over 24 countries. The company has over 500 employees worldwide and operates in the following industry sectors; Construction, Information and Communication Technology (ICT), Mining, Oil & Gas, Pharmaceuticals, Public Sector, Transport, and Utilities.

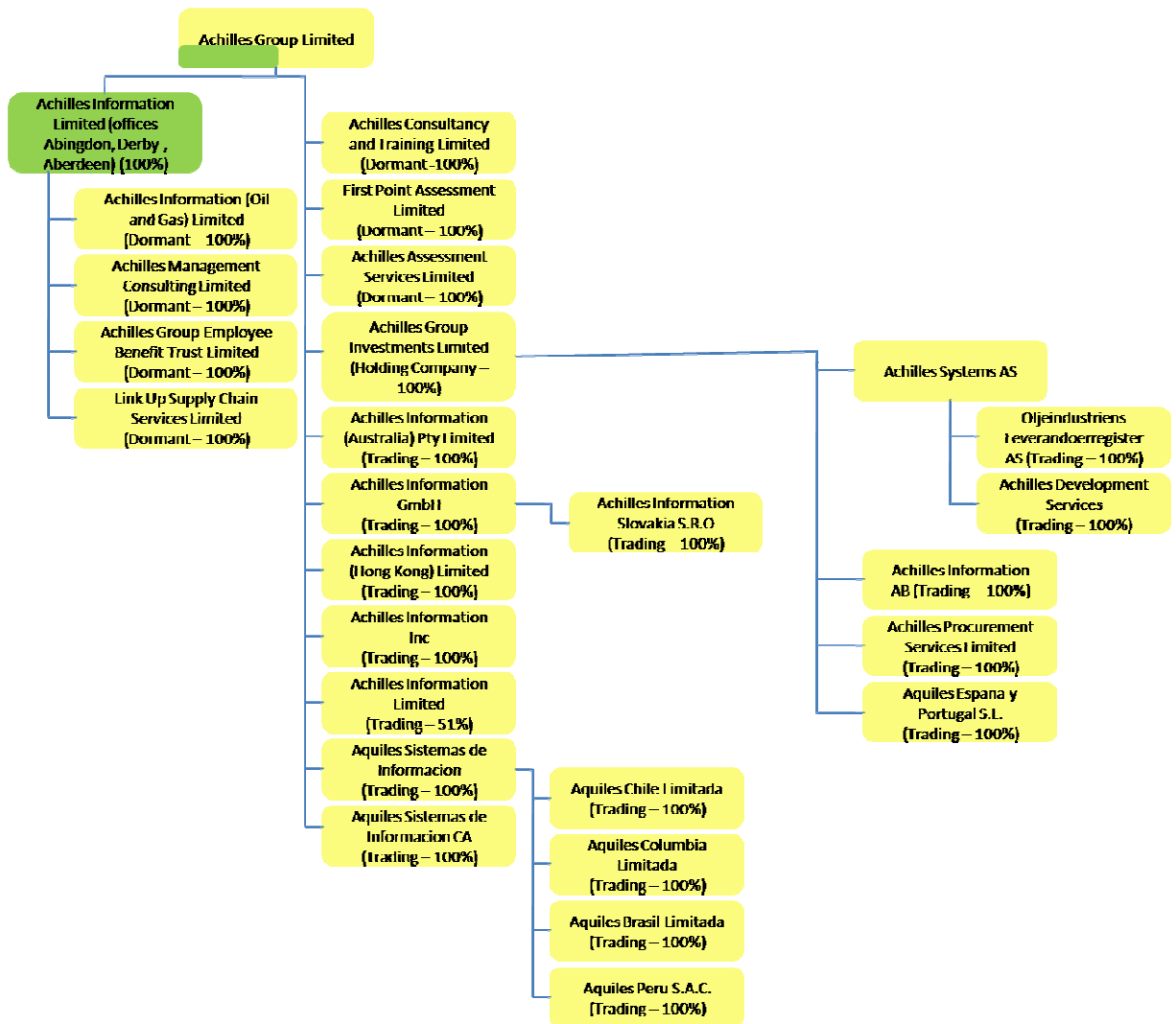
Boundary – the diagram below shows the organisational structure used for describing the organisation's operational greenhouse gas (GHG) emissions inventory, and what business units were included in the CEMARS certification. Yellow business units were excluded from the certification.

¹ **Disclaimer:** This Disclosure Statement is a summary of the verified information considered for certification and the certification decision. It should not be taken to represent the full submission for certification. While every effort has been made to ensure that the information in this Disclosure Statement is accurate and complete, Landcare Research does not, to the maximum extent permitted by law, give any warranty or guarantee relating to the accuracy or reliability of the information.

Summary of CEMARS® certification:



Achilles Group (UK Operations)



Consolidation approach – operational control

Base year – 01/05/2007 to 30/04/2008

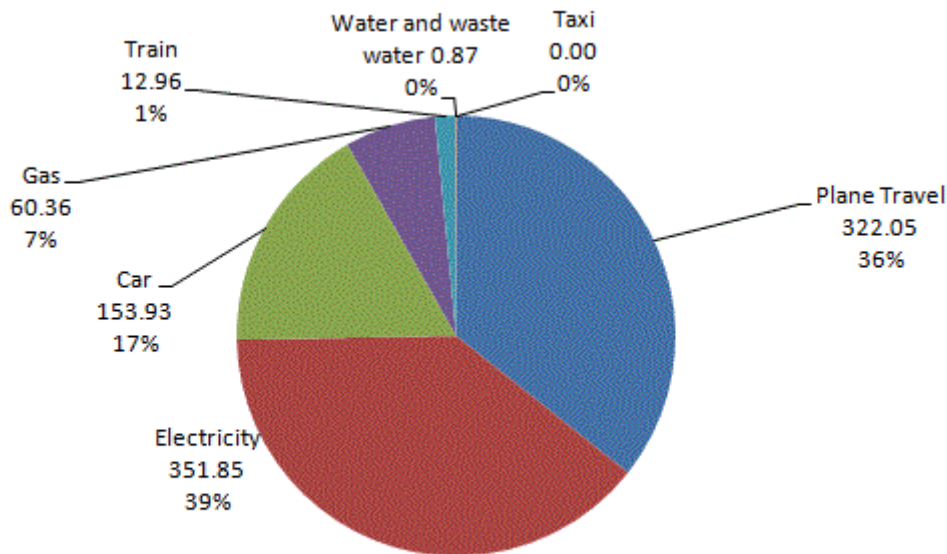
Measurement period – 01/05/2009 to 30/04/2010

GHG emissions source inclusions – the diagram below shows the operational GHG emissions by emissions source. Total emissions for this period were 902.01 tonnes of carbon dioxide equivalents (CO₂e).

Summary of CEMARS® certification:



Achilles Group (UK Operations)



Total emissions by emission source

Emissions intensity– the emissions intensity has been calculated as:

- 46.57 tonnes CO₂e per £M gross turnover
- 4.22 tonnes CO₂e per full time employee

GHG emissions source exclusions – the following emissions sources were excluded from the inventory for this measurement period due to their *de minimis* nature:

- Couriers
- Taxi Travel
- Bus Travel
- Leased Vehicles
- Waste to landfill

GHG emissions reduction commitments – Achilles Group (UK operations) has developed emissions reduction targets and a GHG emissions reduction plan, key targets include:

- The metric that will be used to measure progress is relative carbon emissions (in tCO₂e) and the key performance indicators (intensity metrics) will be gross turnover and the number of full time employees.
- Achilles recognises the carbon reduction commitments from the UK government, which is to reduce CO₂ emissions by 30% by 2020. Achilles has pledged to reduce its relative emissions by 3% (against the baseline year) by 31st April 2011 and is looking to align with the carbon reduction commitments from the UK government

Key reduction projects from the management and reduction plan include:

- Air travel policy review – Assess options for monthly cap on air miles, investigate video conferencing in key offices.
- Car travel policy review – Assess options for an incentivisation scheme for train travel.

Summary of CEMARS® certification:



Achilles Group (UK Operations)

- Lighting campaign – Sustained company-wide ‘Switch it off’ campaign and lighting efficiency improvement analysis.
- Data management – Continual improvement of existing expense claim forms to facilitate accurate data entry and collection.

GHG emissions reduction report against base year – the following reductions have been achieved:

- An intensity reduction was seen for the full time employee (FTE) key performance indicator against last year of 0.21 tonne per FTE; this represents a reduction of 4.7%.
- An absolute scope 1 reduction of 3.86%
- A reduction of the 5-year average emissions intensity (tCO₂e/£M) of 5.3%.

Verified by – carbonZero SBU

Threshold of materiality – excluded emissions do not exceed 5% of the total footprint for organisation and product boundary stated.

Level of assurance – limited

Certification status – CEMARS certified “organisation”

Certificate number – 2011036J

Valid until – 31 August 2013